

The Samling Foundation
NURTURING TOMORROW'S PERFORMING AND VISUAL ARTISTS

NEWS

SUMMER 2003

ISSUE 8

The Samling Garden Party

Raising Funds for
The Samling Foundation
at Dilston House, Corbridge
on Sunday 22nd June 2003

Traditional and Classical Music
Art Exhibition Auction

Barbecue Lunch
Afternoon Tea Seafood Bar
Tickets including Lunch and Tea
Adults £15.00/Children £5.00

Family Ticket
2 adults and up to 4 children £35
Telephone: 01434 602885

North East Coup

After three years and one unavoidable cancellation we have finally got a date, July 17th, for soprano Rebecca Evans and mezzo Katarina Karnéus to appear in the same country, on the same platform and at the same time. Two artists of their calibre rarely appear outside the major international centres and the fact that this concert is to be held in Newcastle is a major coup for the Foundation and the North East.



Katarina Karnéus

Friends of the Foundation from its beginning, both Rebecca Evans and 'Cardiff Singer of the World' Katarina Karnéus have starred in all the principal opera houses across the world, including the Metropolitan New York, Covent Garden and Bayerische Staatsoper.

Internationally active as concert and recital singers, they have taken part at the Proms in London, the Salzburg Festival, the Edinburgh Festival and Gala Concerts with Bryn Terfel and Luciano Pavarotti. Their programme is a treat and will include music by Mozart, Brahms, Rossini and Bernstein. They will be accompanied by the pianist Michael Pollock.

Tickets for the concert, which is to be held in The Assembly Rooms in Newcastle-upon-Tyne, are available on 01434

602885 or enquiries@samlingfoundation.org. or in person at Windows, Central Arcade, Newcastle upon Tyne priced £20 and £15 (all concessions).

There are also a limited number of tickets at £75, including the best reserved seats, drinks and canapés in the interval and a chance to meet the artists over dinner after the concert. These are available directly from the Samling Foundation on 01434 602885 or enquiries@samlingfoundation.org

This concert has been sponsored by Karol Marketing and IKON Office Solutions.



Rebecca Evans



Amy Black

Party in the Garden

The Samling Foundation's annual fund-raising 'Party in the Garden' has become a summer tradition in Tynedale. Held for the past three years in the beautiful gardens of Dilston House near Corbridge, the home of Chairman, Roger McKechnie and his wife Eileen, the Party is a fun day out for all the family.

The Party in the Garden raises funds for the work of the Foundation and offers something for everyone. Non stop live entertainment will feature the Samling Scholar, mezzo-soprano Amy Black, the violinist Peter Tickell and members of the Young Sinfonia. This will be combined with an exhibition throughout the house and garden of original artwork and crafts by Samling Alumni and Tynedale Artists Network. An auction, games and activities for children and a delicious barbecue and afternoon tea complete the day.

More information and tickets are available by calling The Samling Foundation on 01434 602885.

arena - update



Put five artists in five public 'arenas' in the North East, add to the mix 60 of Tyne and Wear's most gifted and talented post 16 Art students and their teachers and what do you get? arena set out to examine what is understood by art in public space, to push boundaries and question the nature of what public art can be. Here is what is emerging through these five major public art commissions...

Runa Islam is proposing a film using the iconic Owen Luder car park in Gateshead, famous for its use in the film Get Carter starring Michael Caine in the 1970s. Students are learning filmic techniques and are also working on their own production, to mirror Runa's.



Louise K. Wilson and her students have been immersing themselves in research behind scenes at Newcastle Airport, a place of heightened emotion – fear, excitement, expectation, disappointment. To experience fear first hand, Louise has taken a flying lesson and judging by the photographs taken by our documentary photographer, Mark Pinder, it was a white-knuckle experience! Louise's work will take the form of an investigation into trust and belief - the resulting work being a sound piece to be broadcast.

Carl von Weiler is investigating notions of gravity and tension, which will be manifested in short video works to be shown on monitors to be sited both above and underground in Metro stations. Armed with disposable cameras and travel passes Carl, the students and teachers have spent days researching the networks finding the best possible locations for the work. The students are being encouraged to make their own work sparked off by their investigations.



Tom Woolford has become fascinated by the border between land and sea at Tynemouth and has been working with the Port of Tyne Authority to investigate navigational techniques. His work is likely to be a large illuminated sign. His students are investigating text to form the content, including graffiti messages, which they have been encouraged to photograph but not add to!

The planning of Wolfgang Weileder's proposed time based sculptural event in Newcastle's City Centre is progressing and students are learning his documentation techniques, making their own pinhole cameras and experimenting with long exposures. They will also be learning bricklaying skills as part of the project.



May 19th saw Antony Gormley, who is leading the project, meet up again with participants – artists, students and their teachers at BALTIC, the Centre for Contemporary Art at Gateshead, a key partner in the project. Each group of students was asked to make a short informal presentation of the work accomplished to date. Although this was quite nerve-wracking for them they did an excellent job.

Antony challenged them to think critically, to question assumptions and opinions and made clear that they could change the nature of the projects and the individual artists' commissions. The artists themselves, although involved in the preparation of the presentations, stepped back with the result that the session has empowered the students to move forward creatively into new territories.

Top to bottom: Tom Woolford; Louise K. Wilson coming in to land at Newcastle Airport; Students at Tynemouth Priory; Working session at BALTIC.

Photography: Mark Pinder

Catch up with the latest at www.arenaproject.org

Fly with me!

In our occasional series we ask artists who work with us to write about what they do and why they do it. Malcolm Martineau is one of the finest accompanists in the world today and whether it is on the concert platform, recording studio or in our masterclasses on Ullswater he brings to us, seemingly effortlessly, unique insights. The phrase 'the art that conceals art' could have been invented for him. This is what he says ...

The great thing about my life is its variety. I get to play some of the world's most beautiful songs from Schubert and Wolf in German and Fauré and Poulenc in French to the more unusual songs from Scandinavia and the



Samling Foundation Trustee, Malcolm Martineau

passionate Russian outpourings of Tchaikovsky and Rakhmaninov. ...AND I play them with some special singers in interesting parts of the world. I am extremely lucky. April found me touring seven cities in the States with a lovely American mezzo and the first half of May is Europe with a Canadian tenor doing Schubert's Die

MASTERCLASS NEWS

The Foundation was grateful to Sarah Walker who joined Pat MacMahon and Paul Farrington to lead our Masterclass in April on Ullswater. The international mezzo-soprano stepped in at the last moment when Sir Thomas Allen was indisposed. Once again we were impressed by the standard of young singers who took part in an unforgettable week. We're glad to report that Tom has since made a full recovery and is now in fine form. Six young singers have been chosen to take part in our next Masterclass Week in November, which is being led by Della Jones and Paul Farrington. They will be joined by actors Richard Pasco and Barbara Leigh Hunt - an exciting prospect for all!



Sarah Walker

Schoene Muellerin. The exciting thing about all live music is the element of surprise and that is particularly the case if there are only two of you on stage.

All music-making has to be spontaneous and that is exhilarating when the two performers trust each other enough to take risks. It is important in rehearsal to sort out the basics like tempo and breathing spaces and the general attitude to the song; that one of you isn't thinking the song as sad while the other thinks it chirpy! After that you have to leave all the doors open for things to happen on the night and they usually do. The same song with the same singer will be different on consecutive nights because you both have mood and energy changes and each reacts instinctively to the other like in any relationship.

In a rehearsal the first thing I do always is to play the song through without talking and after that play it again BEFORE discussing it. It is amazing how most of the problems iron themselves out in that second play through. The important thing in performing songs is to remember that you are telling a story and to deliver that clearly is your first priority. I am often asked whether it is difficult to play for lots of singers, and how do I remember what each of them does in a particular song. I don't say to myself "this singer is standing in the bow of the piano and she sings this song like this" I react to whatever happens on that day and sometimes we fly!!!

www.samlingfoundation.org

Last issue, we introduced our newly-launched websites, and encouraged you to visit both www.samlingfoundation.org and www.arenaproject.org. We are delighted that both sites have proved popular and have been encouraged by the feedback, the input and the statistics.

Since launching the sites in February,

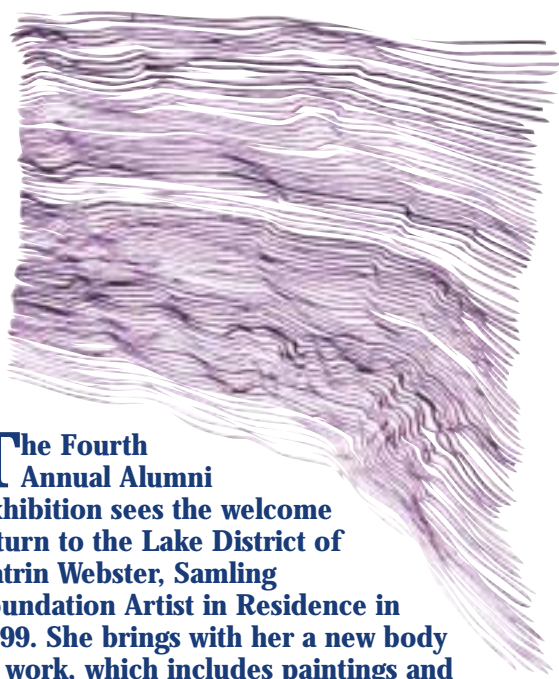
www.samlingfoundation.org has had over 2,500 visits.

The site is a resource to find out up-to-the-minute information about the work of The Samling Foundation and is tracking the work of artists who have passed through the Samling experience. We are constantly updating the site and adding further information, so please visit regularly.

Over the same period, www.arenaproject.org has had more than 1200 visits. The website is proving to be a superb resource and a focus for this ground-breaking project. Visit the site to see the progress of each of the five commissions, the thoughts and work of the artists, students and teachers involved. The site is constantly evolving, one of the latest additions being a video interview with the leader of the project, Antony Gormley. Log on to find out all the latest news.



Alumni Show



The Fourth Annual Alumni Exhibition sees the welcome return to the Lake District of **Catrin Webster, Samling Foundation Artist in Residence in 1999.** She brings with her a new body of work, which includes paintings and drawings made at the Tate Modern and at the Art Gallery of Ontario in Toronto.

Catrin's work is currently centred on redefining 'landscape' painting and exploring to what extent history and contemporary art practice characterise our understanding of the form. Drawn by the interrelationship between the language of painting and other two-dimensional media such as film, photography, print and the televisual, Catrin's work explores how painting can exploit this relationship to continually re-invent itself.

Catrin, a graduate of The Slade School of Fine Art, has exhibited widely in solo and group exhibitions in England and Wales, as well as in Italy, The United States, Iceland, Oman, Spain and Germany.

The exhibition in the Circle Gallery at Theatre by the Lake in Keswick runs from May 24th until June 22nd and is generally open all day, every day of the week, between the hours of 9.30 a.m. and 11 p.m. Occasionally it is closed for a short while for a private event. Call 017687 72282 for more details.

A Private Viewing of the work in the company of the artist will be held on Friday May 30th from 5.30 – 7.15 p.m.

If you would like to receive an invitation please call us on 01434 602885.

Image: Water-colour on paper, 150 x 175cm
Oriol: Viewfinder, Tate Modern 2002 -03

Convocation

Sir Thomas Allen will be giving The Convocation Lecture at the University of Newcastle upon Tyne on Saturday 7th June at 6pm. This lecture is open to all members of the public as part of the University's Public Lectures programme. Admission is free but places must be booked on 0191 2227250. Full details of the programme can be seen at www.ncl.ac.uk/alumni/events/reunion/programme.html

Diary Dates

Thursday February 6th arena Launch at BALTIC, The Centre for Contemporary Art, Gateshead

March 30th – April 6th The Seventh Annual Masterclass Week led by Sir Thomas Allen, Patricia MacMahon, Paul Farrington with pianists Simon Over and Julia Lynch with this year's specially selected young singers - Amy Black, Lucy Crowe, Sophie Graf, Bibi Heal, John MacKenzie and Thomas Walker

Choral Workshops, Monday March 31st 10a.m. – 2.30p.m. Open Afternoon of Masterclasses, Wednesday April 2nd 2p.m. – 5p.m.

Gala Concert, Saturday April 5th 7p.m. Penrith Methodist Church

May 24th – June 22nd The Samling Foundation Alumni Exhibition featuring work by abstract landscape artist, Catrin Webster.

Circle Gallery, Theatre by the Lake, Keswick

April/May/June arena - The Public Art Commissions Artists Runa Islam, Wolfgang Weileder, Carl von Weiler, Louise K. Wilson and Tom Woolford, selected to take part in this project will realise five individual commissions in 'arenas' of their choice across Tyne and Wear.

Sunday June 22nd The Samling Picnic – the annual party in the garden at Dilston House, Corbridge with non-stop live music and an art exhibition.

Thursday July 17th A Gala Evening with Katarina Karnéus and Rebecca Evans with pianist Michael Pollock 7p.m. *Assembly Rooms, Newcastle upon Tyne*

November 2nd – 9th Masterclass Week led by Della Jones, Paul Farrington, pianists Iain Burnside and Caroline Dowdle and actors Richard Pasco and Barbara Leigh Hunt. Together they will be working with this year's specially selected young singers - Carolyn Dobbin, Amy Freston, Gudrun Olafsdottir, Kate Valentine, Kris Beligh.

Open Afternoon of Masterclasses, Wednesday 5th November 2p.m. – 5p.m.

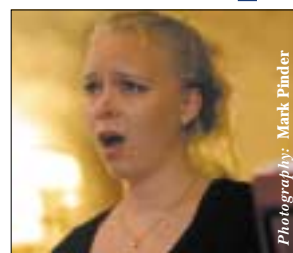
Gala Concert, Saturday 8th November 7p.m.

Choral Workshops, Monday 10th November 10a.m. – 3p.m. Penrith Methodist Church

Thursday January 29th 2004 A Gala Concert with Sir Thomas Allen, Alumni and friends. 7p.m. *St. John's, Smith Square, London*

Creative Partnerships

The Swedish soprano who studied with Sir Thomas Allen and Ileana Cotrubas last year, Samling Scholar Henrikka Gröndahl, has been invited to sing with the Northern Sinfonia conducted by fellow Scandinavian, Susanna Malkki. She will perform Berio - Folksongs, the twentieth century masterpiece written for Cathy Berberian. She



Photography: Mark Pinder

leads the way as a result of a creative partnership between the Foundation and Sage Gateshead. This partnership will build momentum towards the end of the year, when another four Samling Scholars are soloists in a performance of Bach - Magnificat with the orchestra and their Music Director Thomas Zehetmair. At present the two organisations are busy making plans for future collaborations when The Sage Gateshead opens during the 2004/2005 season.

Tickets for the concert which also includes Stravinsky's 'Apollon musagète' at All Saints' Church, Quayside, Newcastle on 26th June are available by calling Northern Sinfonia Box Office: 0191 443 4555.

The Samling Foundation

Community Centre, Gilesgate, Hexham, Northumberland NE46 3NP Tel / Fax 01434 602885

e-mail enquiries@samlingfoundation.org website: www.samlingfoundation.org

Patron: Sir Thomas Allen CBE Artistic Director: Karon Wright Charity No: 1058654